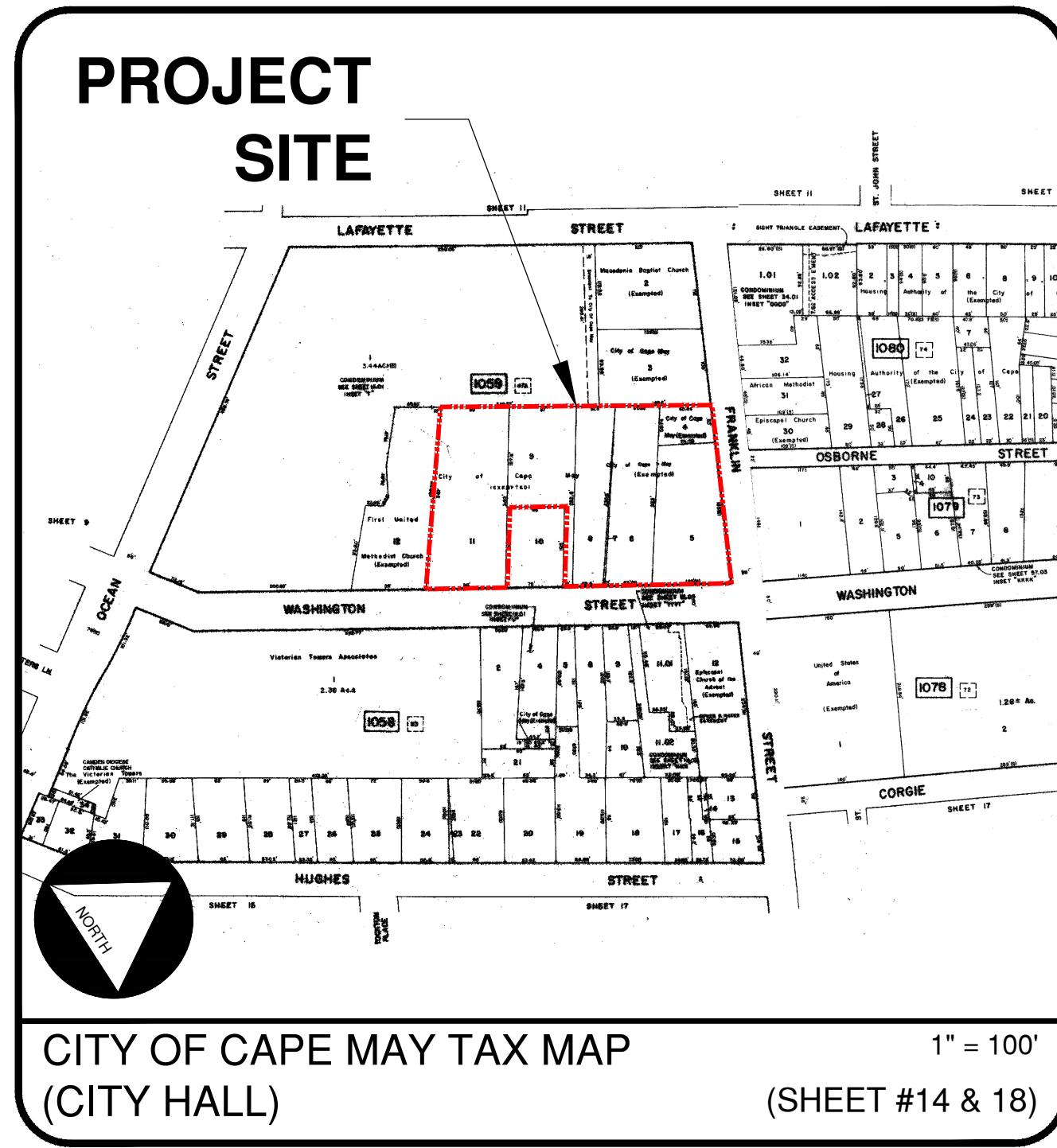




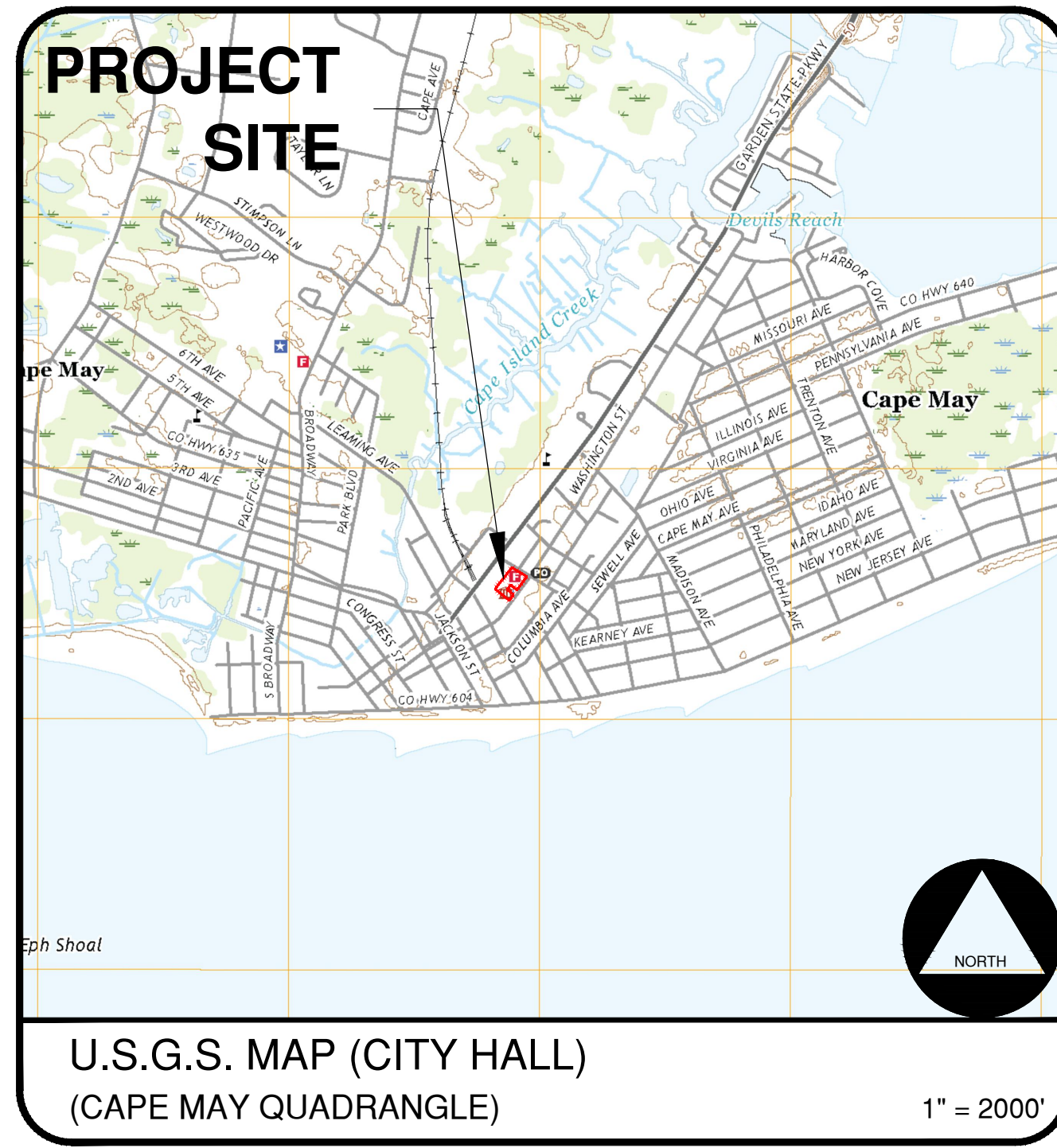
GENERAL LOCATION (CITY HALL)
(NJDEP AERIAL 2020)

1" = 200'



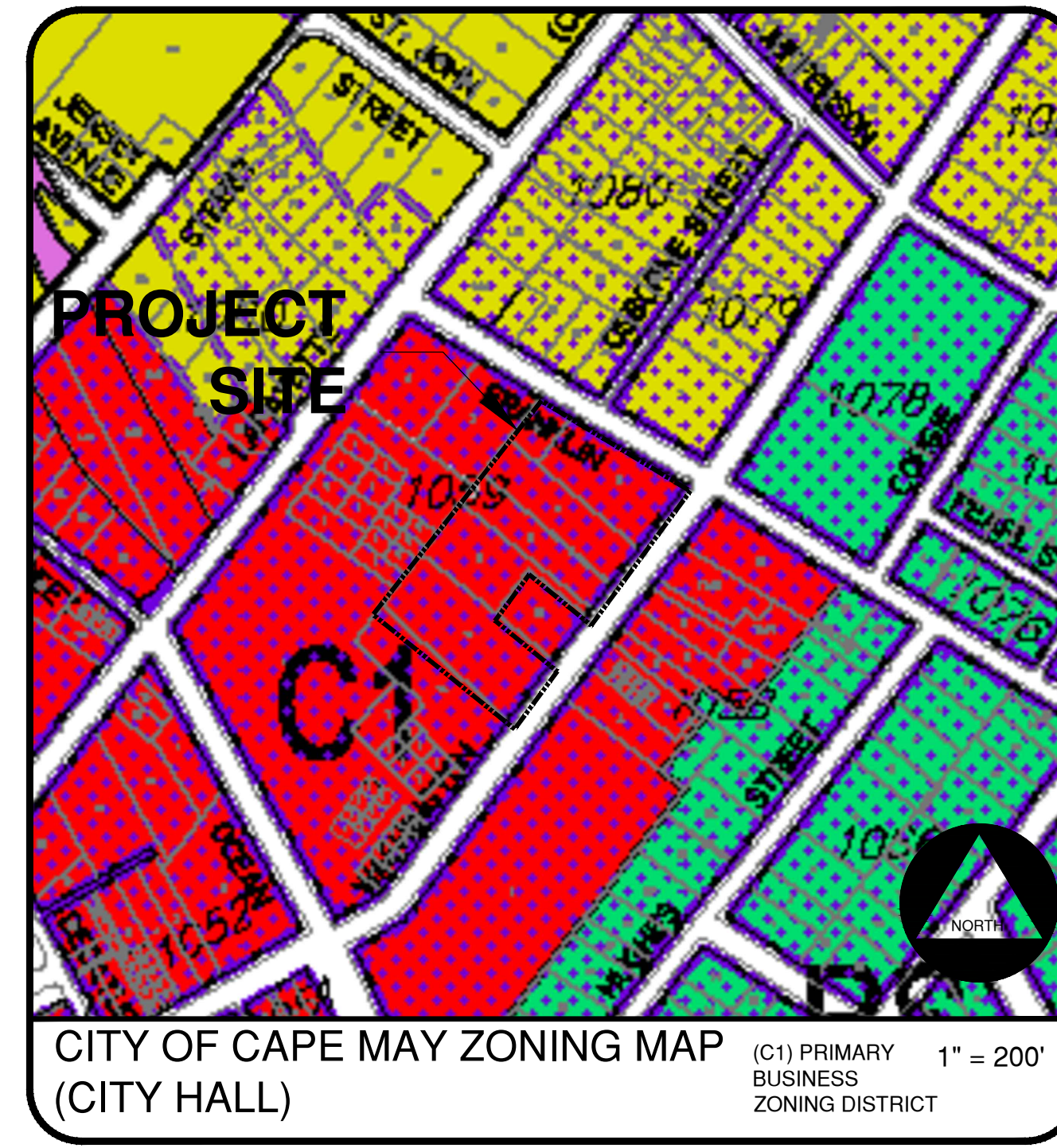
CITY OF CAPE MAY TAX MAP
(CITY HALL)

1" = 100'
(SHEET #14 & 18)



U.S.G.S. MAP (CITY HALL)
(CAPE MAY QUADRANGLE)

1" = 2000'



CITY OF CAPE MAY ZONING MAP
(CITY HALL)

(C1) PRIMARY BUSINESS ZONING DISTRICT
1" = 200'

CITY HALL PARKING LOT & CLAGHORN PLACE RECONSTRUCTION				
ITEM NO.	DESCRIPTION	UNIT	CONTRACT QUANTITY	AS - BUILT QUANTITY
1	MAINTENANCE AND PROTECTION OF TRAFFIC	LS	1	
2	SITE CLEARING	LS	1	
3	SAWCUT PAVEMENT	LF	80	
4	REMOVE CURB	LF	440	
5	REMOVE TREE & PLANT NEW 6"-8" RED OAK IN PROPOSED LOCATION	EA	1	
6	NO ITEM			
7	MILLING EXISTING ASPHALT, 2" DEPTH	SY	2740	
8	HOT MIX ASPHALT 12.5 M64 SURFACE COURSE, 2" THICK	TON	545	
9	HOT MIX ASPHALT 19 M64 BASE COURSE, 2" THICK	TON	160	
10	DENSE GRADED AGGREGATE BASE COURSE, 6" THICK	SY	1230	
11	EXCAVATE ASPHALT & SOIL, 10" DEPTH	SY	1230	
12	PARKING STRIPING	LF	1300	
13	NO ITEM			
14	HANDICAP STRIPING	LF	290	
15	HANDICAP SIGN	EA	4	
16	HANDICAP STRIPING SYMBOL	EA	4	
17	DETECTABLE WARNING STRIP	EA	1	
18	RESET WHEEL STOP	EA	6	
19	NO ITEM			
20	NO ITEM			
21	STOP BAR & STOP SIGN	EA	2	
22	VERTICAL CONCRETE CURB	LF	455	
23	DEPRESSED CURB	LF	15	
24	CONCRETE GUTTER	LF	100	
25	CONCRETE SIDEWALK, 4" THICK	SF	120	
26	NO ITEM			
27	NO ITEM			
28	REMOVE AND REPLACE CHAINLINK FENCE, 10' HIGH	LF	100	
29	CHAINLINK SINGLE GATE	EA	1	
30	CHAINLINK ROLLING GATE	EA	1	
31	NO ITEM			
32	TOPSOIL & SEED	SY	175	
33	16" RCP PIPE, BEDDING AND PAVEMENT SECTION RESTORATION	LF	250	
34	RESET MANHOLE	EA	3	
35	ELECTRIC VEHICLE CHARGING SIGN AND CHARGER COMPLETE	EA	4	
36	ROADWAY EXCAVATION UNCLASSIFIED IF AND WHERE DIRECTED	CY	200	
37	DENSE GRADED AGGREGATE BASE COURSE IF AND WHERE DIRECTED	CY	200	
38	FUEL PRICE ADJUSTMENT ALLOWANCE	DOLLAR	1	5000
39	ASPHALT PRICE ADJUSTMENT ALLOWANCE	DOLLAR	1	5000

CITY HALL PARKING LOT & CLAGHORN PLACE RECONSTRUCTION CITY OF CAPE MAY CAPE MAY COUNTY, NJ


ZACHARY MULLOCK, MAYOR
LORRAINE BALDWIN, DEPUTY MAYOR
SHAINÉ P. MEIER, COUNCILMEMBER
MICHAEL YEAGER, COUNCILMEMBER
MAUREEN K. MCDADE, COUNCILMEMBER

NOTES:

- NJDOT STANDARD ROADWAY CONSTRUCTION/TRAFFIC CONTROL/BRIDGE CONSTRUCTION DETAILS BOOKLET - 2019, ARE APPLICABLE TO THIS PROJECT EXCEPT FOR THOSE DETAILS CONTAINED HEREIN.
- NJDOT UPDATED STANDARD SPECS FOR ROAD & BRIDGE CONSTRUCTION 2019 EDITION AS AMENDED, TO GOVERN.
- NJDOT STANDARD CONSTRUCTION DETAILS TO GOVERN OVER ALL MATERIALS, EQUIPMENT AND PROCEDURES.
- CONTRACTOR SHALL HAVE ALL UTILITIES LOCATED PRIOR TO CONSTRUCTION.
- ALL EXCESS EXCAVATED MATERIALS ARE TO REMAIN THE PROPERTY OF THE TOWNSHIP AND DELIVERED TO THE TOWNSHIP PUBLIC WORKS YARD (IF REQUESTED). ANY POLES REMOVED ARE TO BE PROPERTY OF THE CITY OF OCEAN CITY.
- EXISTING CONDITIONS WERE TAKEN FROM PLAN ENTITLED "SITUATE IN BLOCK 1059, LOTS 4-9 & 11, CITY OF CAPE MAY, CAPE MAY COUNTY, NJ" AND "SITUATE IN BLOCK 1080, LOTS 30 & 31, CITY OF CAPE MAY, CAPE MAY COUNTY, NJ." PREPARED BY GEORGE SWENSEN PLS #GS43415 OF CAPE LAND SURVEYING.

SCHEDULE OF SHEETS

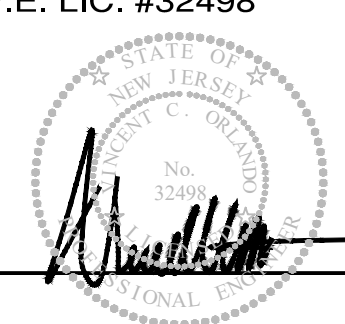
	SHEET NUMBER	ORIGINAL DATE	LAST REVISION DATE
COVER SHEET	1 OF 5	8/6/2024	---
CITY HALL PARKING LOT RECONSTRUCTION.....	2 OF 5	8/6/2024	---
CITY HALL PARKING LOT RECONSTRUCTION - GRADING PLAN.....	3 OF 5	8/6/2024	---
CLAGHORN PLACE DRAINAGE PLAN.....	4 OF 5	8/6/2024	---
ENGINEERING DETAILS	5 OF 5	8/6/2024	---



Engineers Environmental Planners Landscape Architects
CAMBRIDGE PROFESSIONAL OFFICES
5 Cambridge Drive Ocean View New Jersey 08230
(609) 390-9204 • Fax (609) 390-0324 • www.engineeringdesign.com • CERTIFICATE OF AUTHORIZATION #AG02070000


COVER SHEET
CITY OF CAPE MAY
CAPE MAY COUNTY
NEW JERSEY

VINCENT C. ORLANDO
PROFESSIONAL ENGINEER
N.J.P.E. LIC. #32498

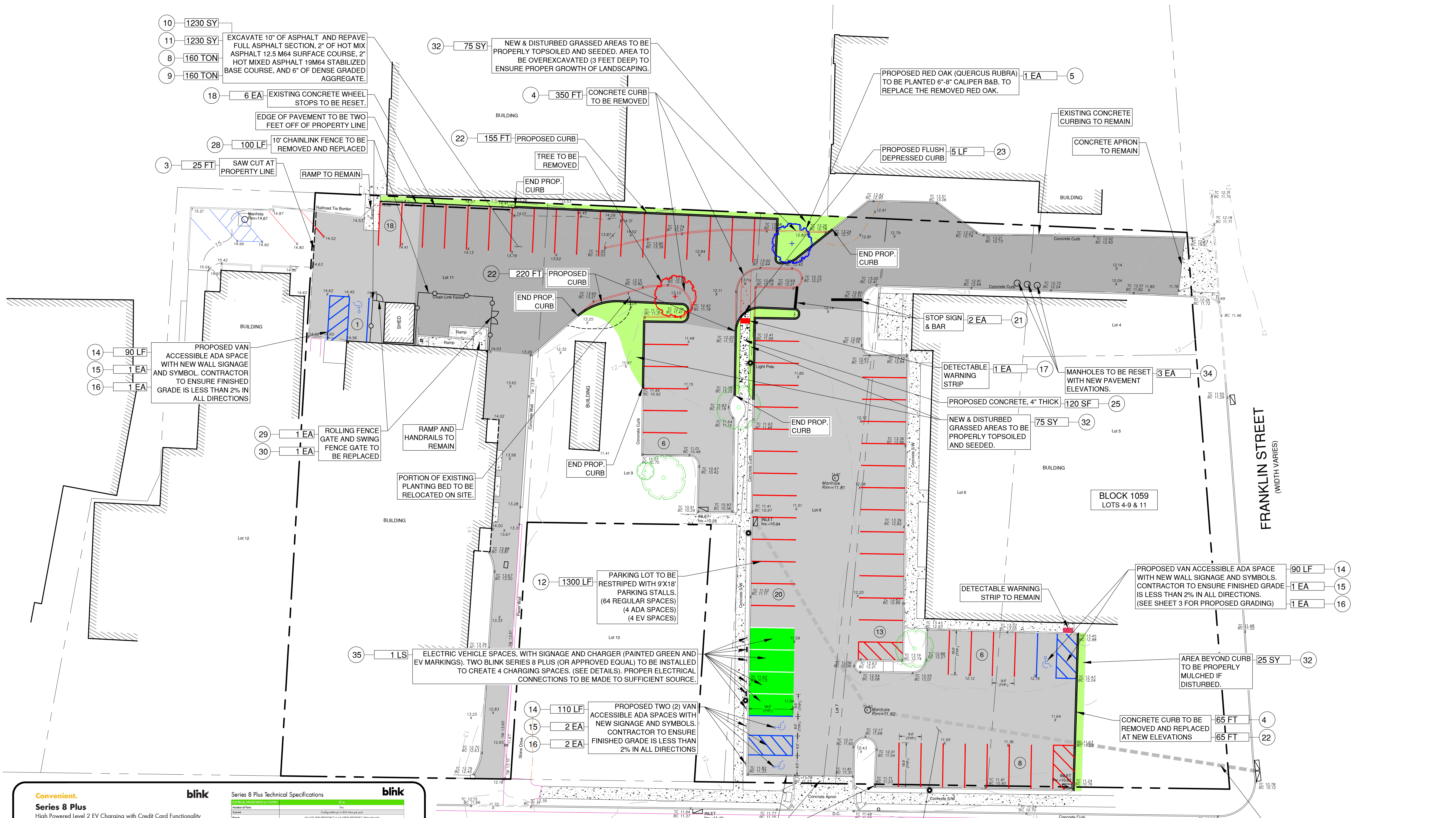


IF THIS PLAN OR DOCUMENT DOES NOT CONTAIN A RAISED SEAL IMPRESSION BEARING THE NAME AND REGISTRATION NUMBER OF THE ABOVE SIGNED PROFESSIONAL, IT MAY NOT BE AN AUTHORIZED COPY OF THE ORIGINAL DOCUMENT AND MAY HAVE BEEN ALTERED. REPRODUCTION OR FURTHER DISSEMINATION OF THE CONTENTS IN WHOLE OR IN PART REQUIRES PERMISSION IN WRITING FROM ENGINEERING DESIGN ASSOCIATES, P.A.

REVISION	DATE	BY



DATE: 8/6/2024	DRAWN BY: MSB
SCALE: AS NOTED	CHECKED BY: VCO
PROJECT #: CM-129	SHEET: 1 OF 5



Convenient. blink

Series 8 Plus
High Powered Level 2 EV Charging with Credit Card Functionality

The Series 8 Plus smart charging station was designed for commercial applications where drivers are likely to pay with a credit card, making it perfect for all commercial settings including shopping malls, hospitals, municipal parking, and any retail location.

POWERFUL • DUAL-PORT • FLEXIBLE

Series 8 Plus Benefits:

- Configurable up to 80A Max per port
- Payment via Google Pay, Apple Pay, QR Code, all major credit cards, and Tap to Pay
- Custom design for new vehicles to charge simultaneously
- Standardized 4.3-inch high resolution LCD screen
- Universal J1772 plug compatible with all electric and plug-in hybrid vehicles
- Bright station status LED indicator lights
- Data communication via built-in 4G LTE
- Built-in electricity metering via smart meter
- Network connection
- Remote station management
- Flexible access control and pricing
- Rugged stainless enclosure
- Pedestal and wall-mount options

Series 8 Plus Technical Specifications	blink
Model	80A
Number of Ports	Two
Power	Configurable up to 80A Max per port
Payment	Tap to Pay (Apple Pay, Google Pay, QR Code), all major credit cards, and Tap to Pay
Screen	Standardized 4.3-inch high resolution LCD screen
Charging Connector	Universal J1772
Charging Station Features	<ul style="list-style-type: none"> • High resolution LCD screen • Bright station status LED indicator lights • Data communication via built-in 4G LTE • Built-in electricity metering via smart meter • Network connection • Remote station management • Flexible access control and pricing • Rugged stainless enclosure • Pedestal and wall-mount options
Charging Station Dimensions	<ul style="list-style-type: none"> • Height: 68.5" (1741mm) • Width: 24.5" (622mm) • Depth: 11.5" (293mm)
Charging Station Weight	150 lbs (68kg)
Charging Station Materials	Stainless Steel
Charging Station Certifications	<ul style="list-style-type: none"> • CE Marked • FCC Class B • UL 1004 • UL 1008 • UL 1009 • UL 1010 • UL 1011 • UL 1012 • UL 1013 • UL 1014 • UL 1015 • UL 1016 • UL 1017 • UL 1018 • UL 1019 • UL 1020 • UL 1021 • UL 1022 • UL 1023 • UL 1024 • UL 1025 • UL 1026 • UL 1027 • UL 1028 • UL 1029 • UL 1030 • UL 1031 • UL 1032 • UL 1033 • UL 1034 • UL 1035 • UL 1036 • UL 1037 • UL 1038 • UL 1039 • UL 1040 • UL 1041 • UL 1042 • UL 1043 • UL 1044 • UL 1045 • UL 1046 • UL 1047 • UL 1048 • UL 1049 • UL 1050
Charging Station Options	<ul style="list-style-type: none"> • Network connection • Remote station management • Flexible access control and pricing • Rugged stainless enclosure • Pedestal and wall-mount options
Charging Station Accessories	<ul style="list-style-type: none"> • Network connection • Remote station management • Flexible access control and pricing • Rugged stainless enclosure • Pedestal and wall-mount options
Charging Station Warranty	3 Year
Charging Station Availability	Available

EV CHARGING DETAILS

NOTES:

1. FOR PROPOSED GRADING INFORMATION SEE SHEET 3 OF THIS SHEET SET.
2. ALL MUNICIPAL STREET SIGNS TEMPORARILY REMOVED DURING CONSTRUCTION SHALL BE UTILIZED AT THE LOCATION THEY CURRENTLY EXIST UNLESS SPECIFIED OTHERWISE BY THE OWNER.

GRAPHIC SCALE
1 inch = 20 ft.

CITY HALL PARKING LOT RECONSTRUCTION

EDA Engineering Design Associates, P.A.
Engineers - Environmental Planners - Landscape Architects

CITY HALL PARKING LOT RECONSTRUCTION
CITY OF CAPE MAY
CAPE MAY COUNTY
NEW JERSEY

(609) 390-0332 • Fax (609) 390-9204 • www.engineeringdesign.com • CERTIFICATE OF AUTHORIZATION# 240A2370300

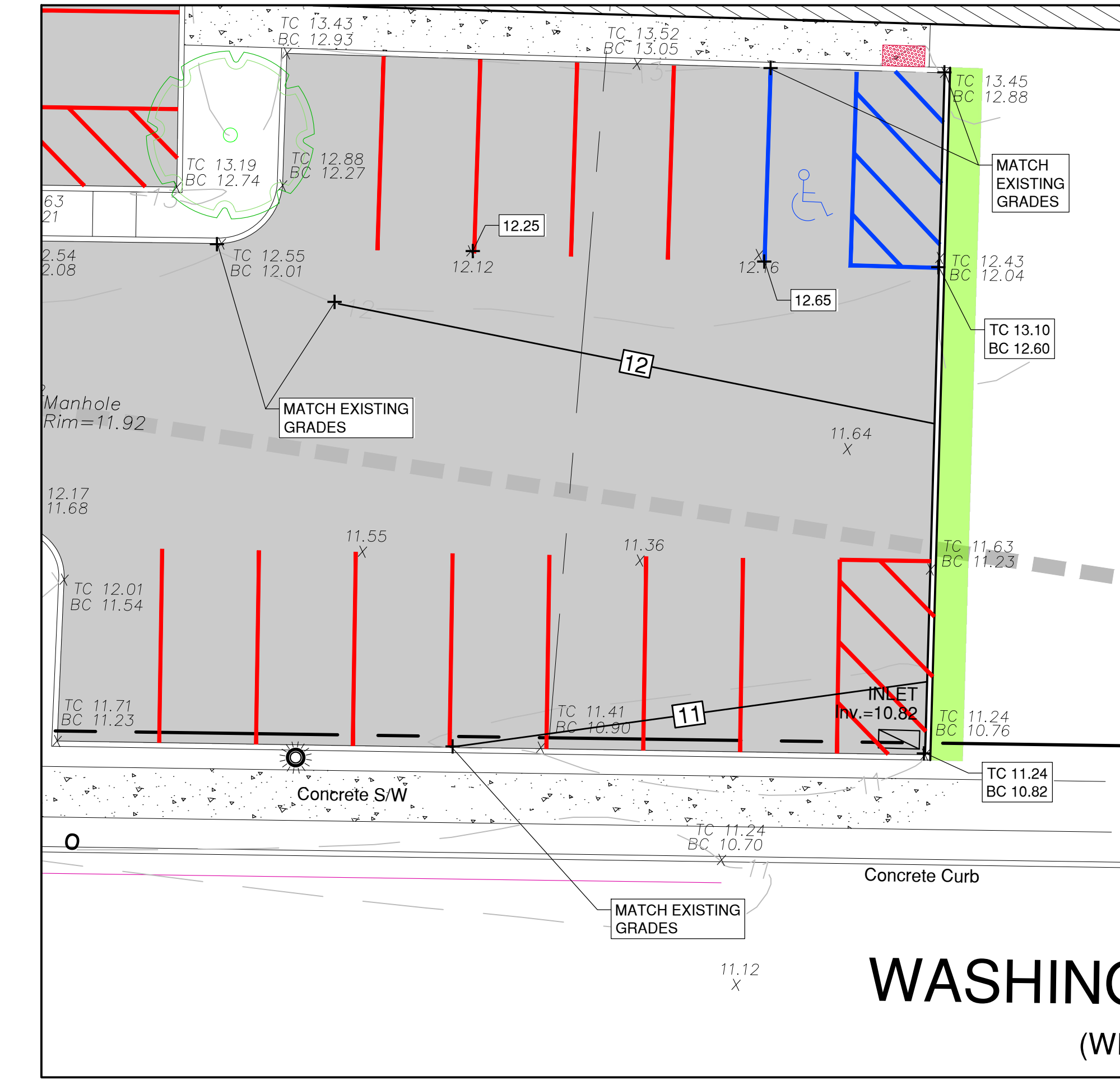
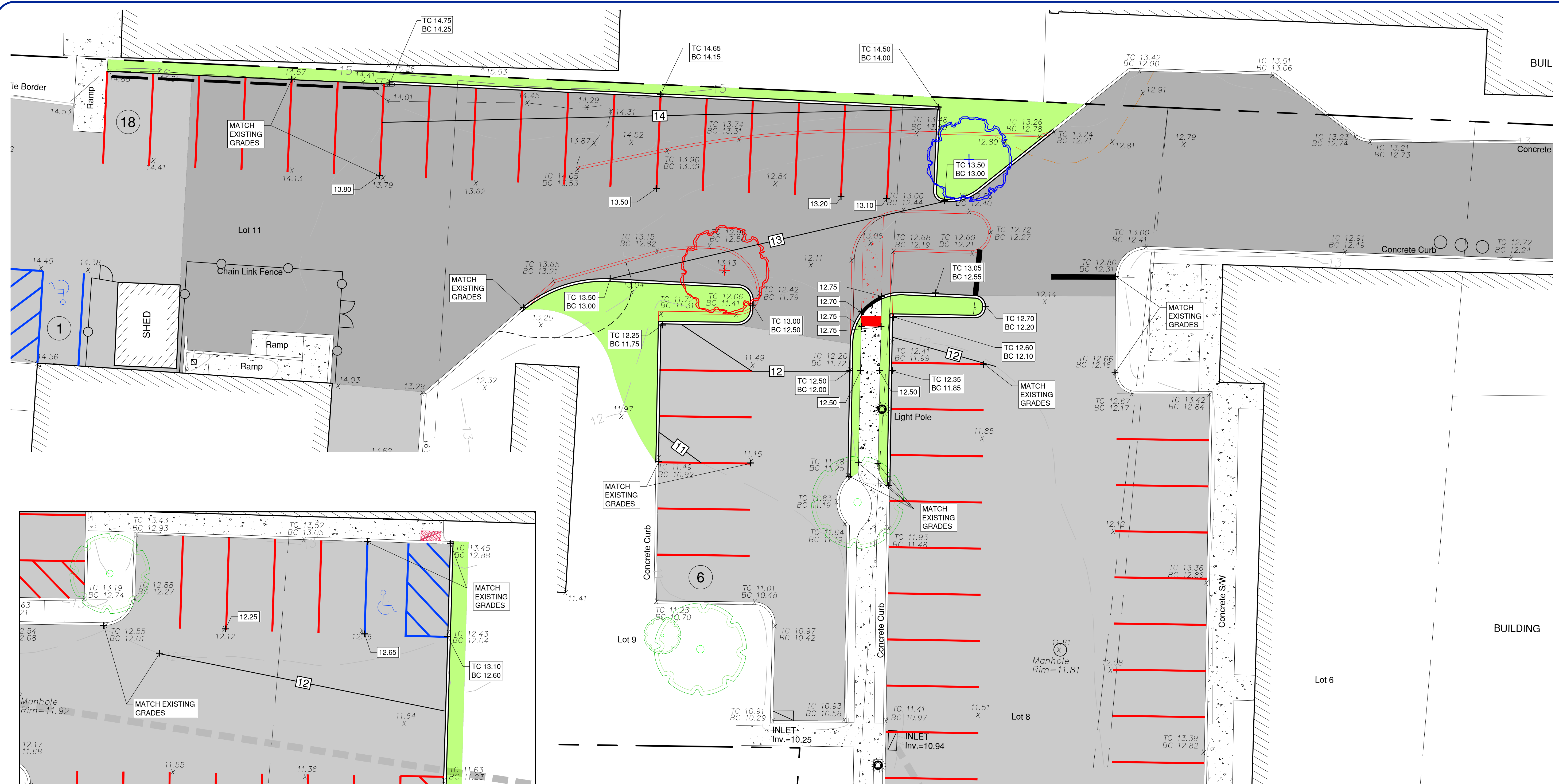
VINCENT C. ORLANDO
PROFESSIONAL ENGINEER
N.J.P.E. LIC. #32498

IF THIS PLAN OR DOCUMENT DOES NOT CONTAIN A RAISED SEAL IMPRESSION BEARING THE NAME AND REGISTRATION NUMBER OF THE ABOVE SIGNED PROFESSIONAL, IT MAY NOT BE AN AUTHORIZED COPY OF THE ORIGINAL DOCUMENT AND MAY HAVE BEEN ALTERED. REPRODUCTION OR FURTHER DISSEMINATION OF THE CONTENTS IN WHOLE OR IN PART REQUIRES PERMISSION IN WRITING FROM ENGINEERING DESIGN ASSOCIATES, P.A.

REVISION	DATE	BY



DATE: 8/6/2024	DRAWN BY: MSB
SCALE: AS NOTED	CHECKED BY: VCO
PROJECT #: CM-129	SHEET: 2 OF 5



GRADING INSET #2

GRADING INSET #1

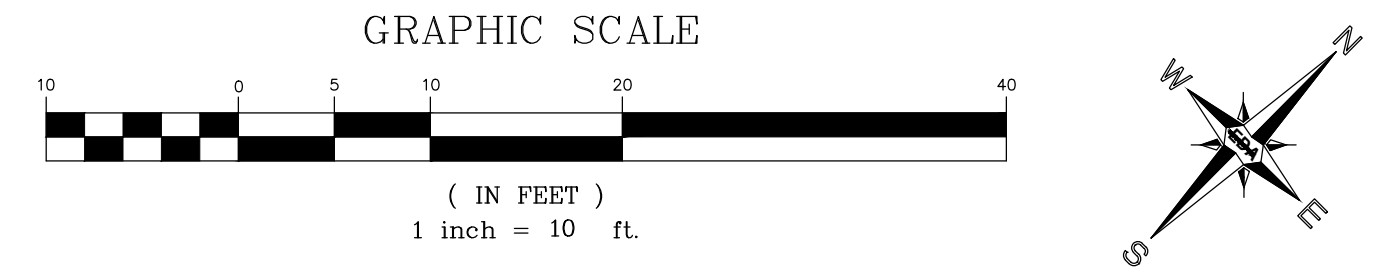
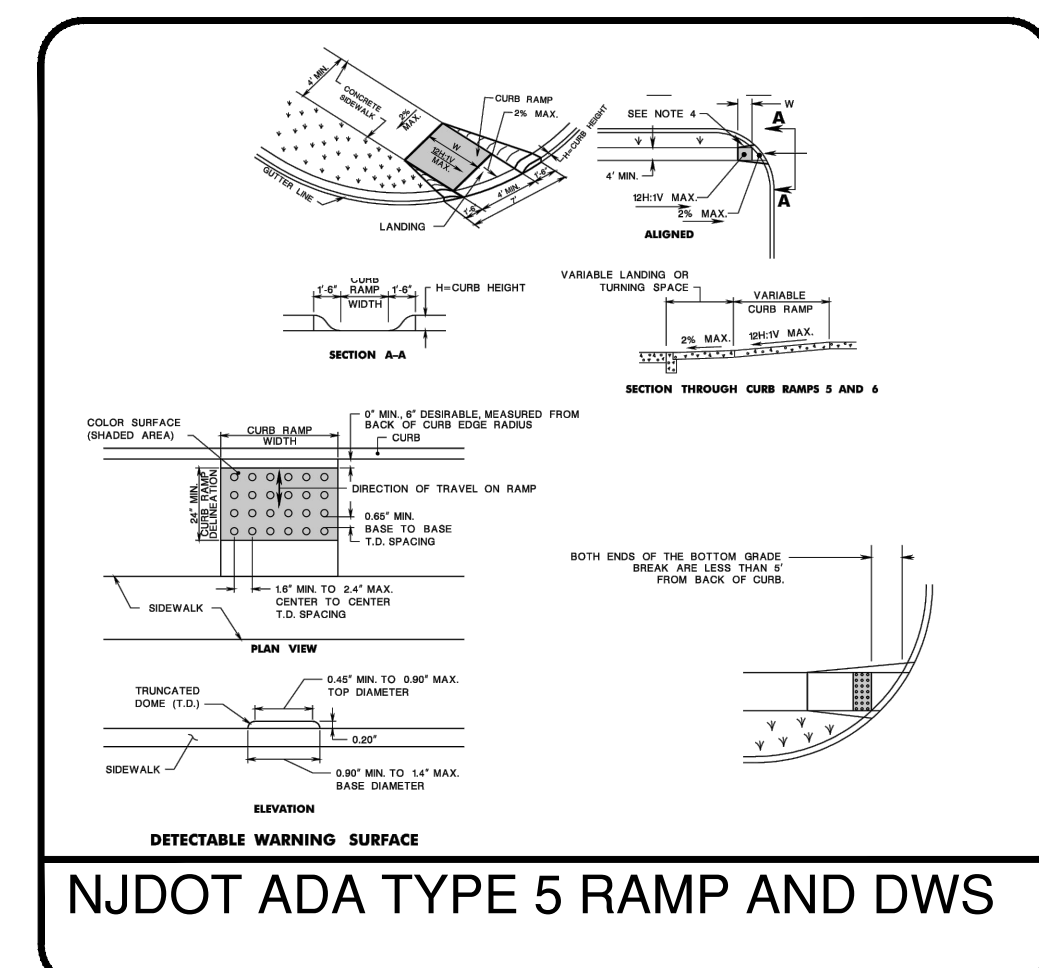
NOTES:

- KEEP TURNING SPACE, APPROACH SIDEWALK TRANSITIONS AND CURB RAMP CLEAR OF OBSTRUCTIONS THAT PROTRUDE ABOVE THE SURFACE.
- FOR SIDEWALKS SEE CURBS AND CURBS.
- CURB RAMP TYPE 5 RAMP SHALL BE FLUSH WITH ROADWAY PAVEMENT THE ENTIRE WIDTH OF THE RAMP PER 11.8.2.4.7.
- FOR CURB RAMP TYPES 5 AND 6 IF A GRASS BUFFER DOES NOT EXIST, SLOPE CURBS TO EQUAL SLOPE OF ADJACENT CURB RAMP.
- SEWERS AND CURB RAMP WITHIN AREA ENCLOSED BY HEAVY LINES INDICATES THE PAY LIMIT FOR CONCRETE SIDEWALK OF APPROPRIATE ADJACENT ENGINEER.
- CURB AND HEADS WITHIN AREA ENCLOSED BY HEAVY LINES INDICATES THE PAY LIMIT FOR VERTICAL CURB OR SLOPING CURB OF APPROPRIATE ADJACENT SIDE AND FLOOR.
- WHERE THE DISTANCE FROM THE CENTER LINE TO THE OUTSIDE EDGE OF SIDEWALK IS 6 FEET OR LESS, CURB RAMP TYPE 5, INSTEAD OF CURB RAMP TYPE THROUGH 6.
- CROSSWALKS AND STOP LINES MAY BE MARKED OR UNMARKED, SEE PLANS.
- THE SHIFLY MAX SLOPE IS THE RUNNING SLOPE FOR CURB RAMP BUT ONLY THE SHIFLY SLOPE BEARING IS TO BE THE RUNNING SLOPE FOR TYPE 5 AND TYPE 6 CURB RAMP. THE RUNNING SLOPE FOR CURB RAMP DOES NOT REQUIRE ITS LENGTH TO EXCEED 10 FEET. THE RUNNING SLOPE MAY EXCEED THE SHIFLY SLOPE AS NOT TO EXCEED THE 8 FEET.
- CURB RAMP TYPE THROUGH 7 ARE NORMALLY PLACED ON THE RADIAL RETURN AT THE INTERSECTION AND ON A TANGENT SECTION AS SHOWN.

NOTES:

- KEEP TURNING SPACE, APPROACH SIDEWALK TRANSITIONS AND CURB RAMP CLEAR OF OBSTRUCTIONS THAT PROTRUDE ABOVE THE SURFACE.
- CROSSWALKS AND STOP LINES MAY BE MARKED OR UNMARKED, SEE PLANS.
- FOR NARROW ISLAND WIDTH SEE PEDESTRIAN REFUGE ISLAND WALKWAY OPENING AT INTERSECTIONS DETAIL.
- FOR MEDIUM AND LARGE ISLAND WIDTH SEE CURB RAMP TYPE 10N CROSSWALK.
- CONSTRUCT CURB RAMP TYPES 1, 2, 3, 4, 6, 7 PERPENDICULAR TO CURBLINE AS SHOWN.
- IF A CURB RAMP IS REQUIRED, THE LOCATION OF THE DETECTABLE WARNING SURFACE MUST BE AT THE BOTTOM OF THE RAMP AND WITHIN THE REQUIRED DISTANCE FROM THE RAMP.
- A STANDARD DETECTABLE WARNING (DWS) SURFACE IS NOT AVAILABLE TO FIT THIS APPLICATION, AND THEREFORE ONE WILL NEED TO BE CUSTOMIZED. THE DWS SHOULD COVER THE ENTIRE WIDTH OF THE RAMP. THE ROWS OF DOMES ON THE DWS SHOULD FOLLOW THE DIRECTION OF TRAVEL OF THE RAMP, SO PEDESTRIANS WHO USE MOBILE DEVICES CAN TRACK BETWEEN THE DOMES.

CURB RAMP NOTES



EDA Engineering Design Associates, P.A.
 Environmental Planners, Landscape Architects
 CAMBRIDGE PROFESSIONAL OFFICES
 500 Cambridge Street, Suite 200
 Cambridge, MA 02142
 (609) 390-0332 • Fax (609) 390-9204 • www.engineeringdesign.com • CERTIFICATE OF AUTHORIZATION# 240A23792000

CITY HALL PARKING LOT RECONSTRUCTION
 CITY OF CAPE MAY
 CAPE MAY COUNTY
 NEW JERSEY

VINCENT C. ORLANDO
 PROFESSIONAL ENGINEER
 N.J.P.E. LIC. #32498

IF THIS PLAN OR DOCUMENT DOES NOT CONTAIN A RAISED SEAL IMPRESSION BEARING THE NAME AND REGISTRATION NUMBER OF THE ABOVE SIGNED PROFESSIONAL, IT MAY NOT BE AN AUTHORIZED COPY OF THE ORIGINAL DOCUMENT AND MAY HAVE BEEN ALTERED. REPRODUCTION OR FURTHER DISSEMINATION OF THE CONTENTS IN WHOLE OR IN PART REQUIRES PERMISSION IN WRITING FROM ENGINEERING DESIGN ASSOCIATES, P.A.

REVISION	DATE	BY



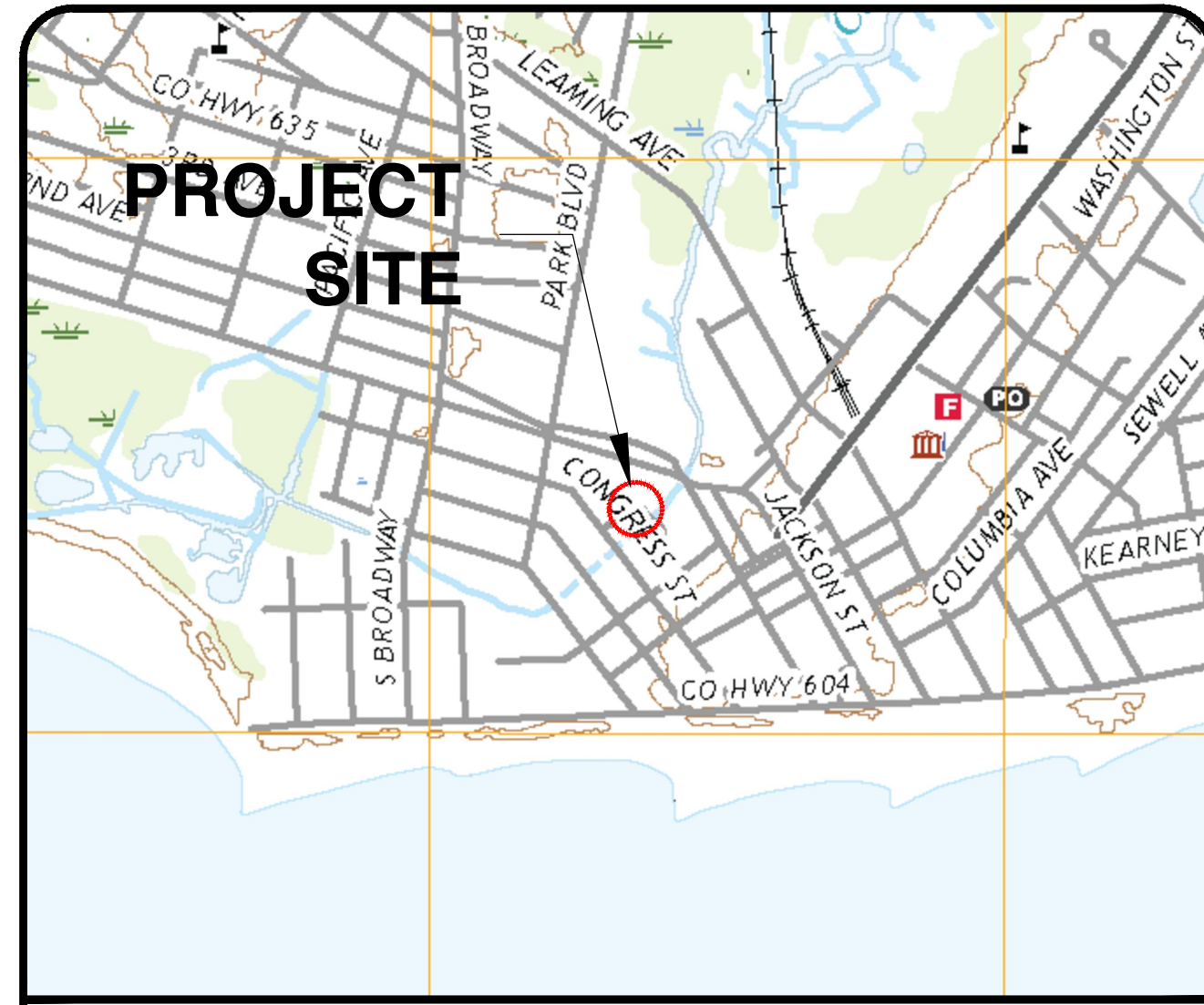
DATE: 8/6/2024	DRAWN BY: MSB
SCALE: AS NOTED	CHECKED BY: VCO
PROJECT #: CM-129	SHEET: 3 OF 5

CITY HALL PARKING LOT RECONSTRUCTION - GRADING PLAN



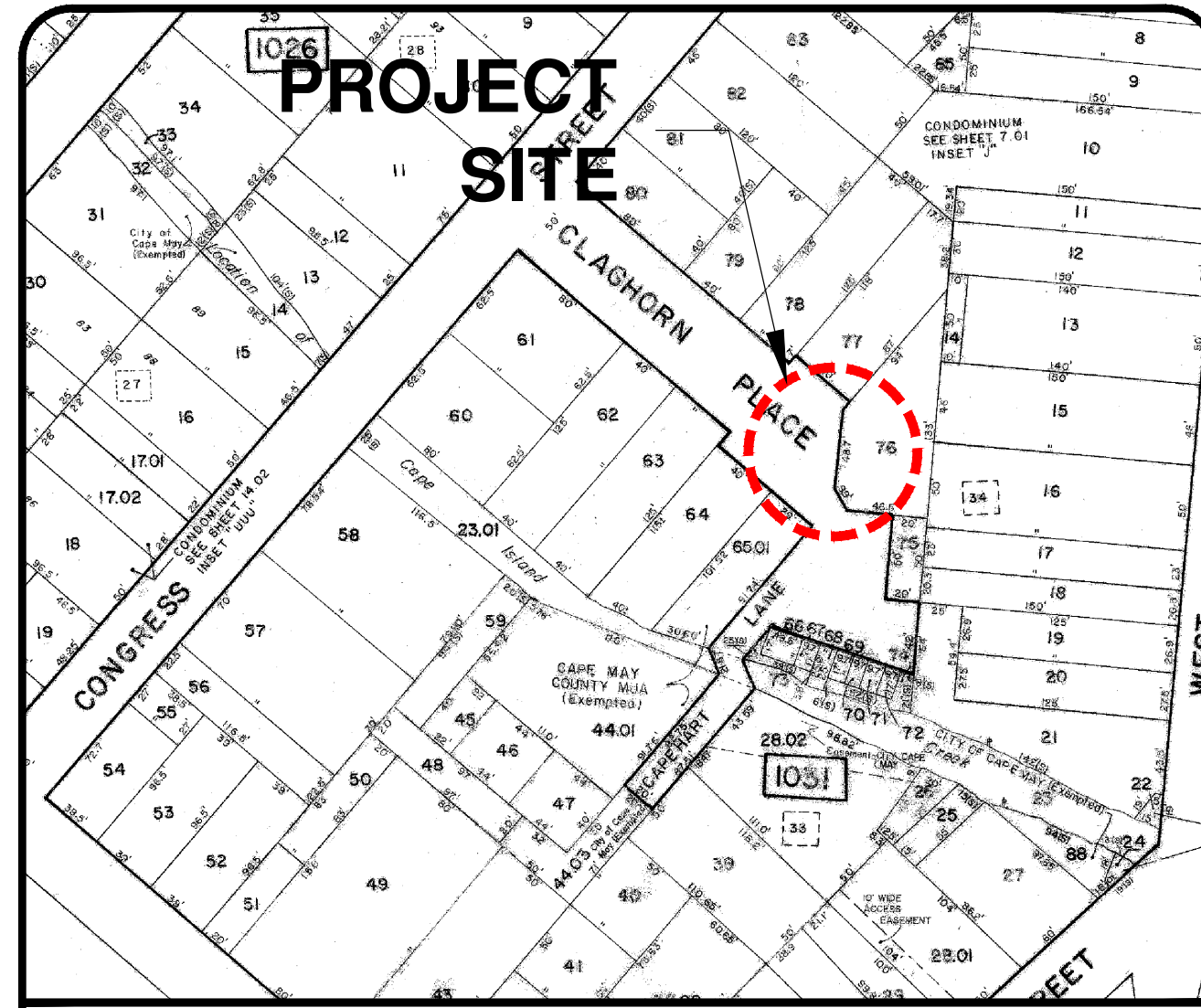
GENERAL LOCATION (CLAGHORN PL.)
(NJDEP AERIAL 2020)

1" = 100'



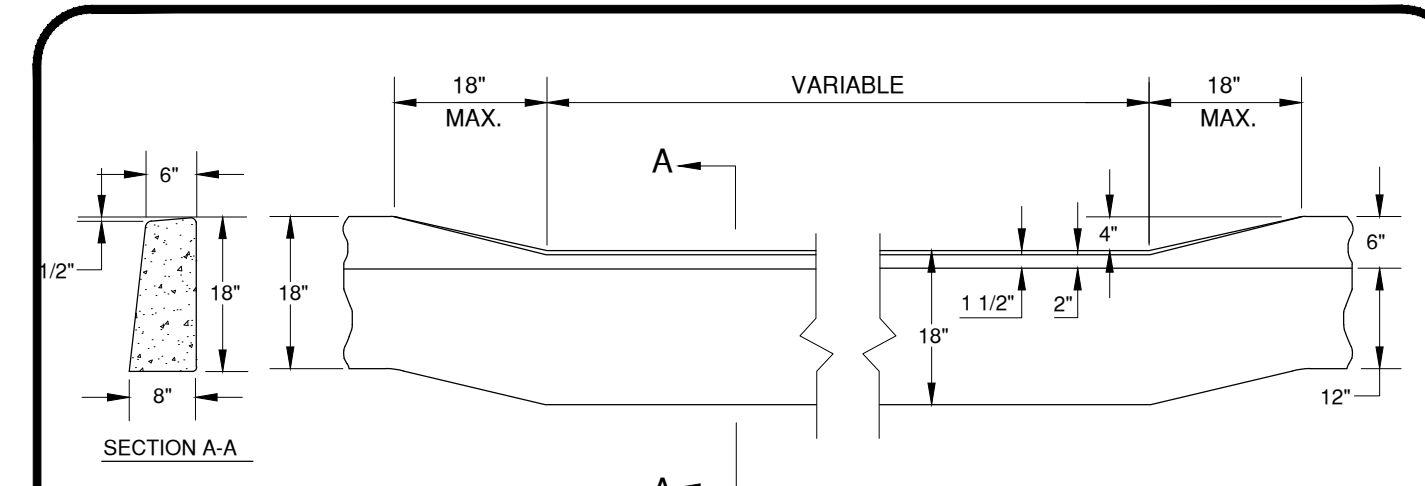
U.S.G.S MAP (CLAGHORN PL.)
(CAPE MAY QUADRANGLE)

1" = 1000'

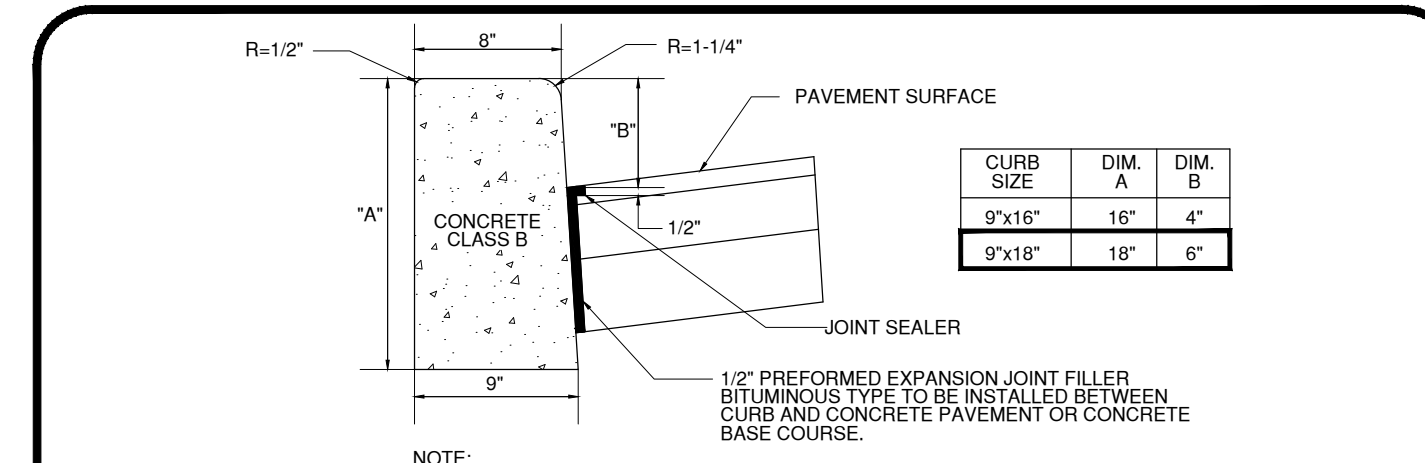


CITY OF CAPE MAY TAX MAP (CLAGHORN PL.)
(SHEET #7)

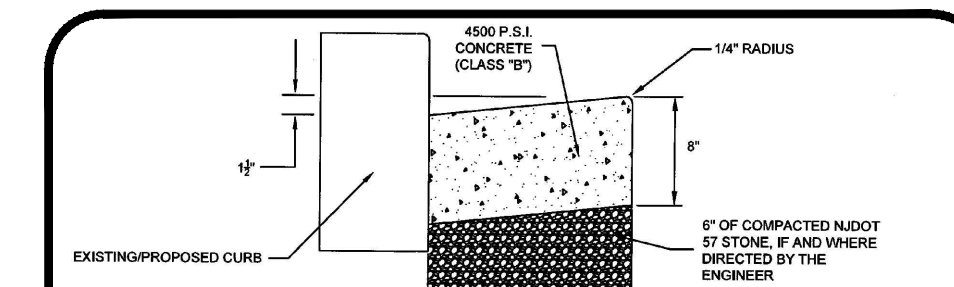
1" = 100'



CONCRETE DEP. CURB N.T.S.

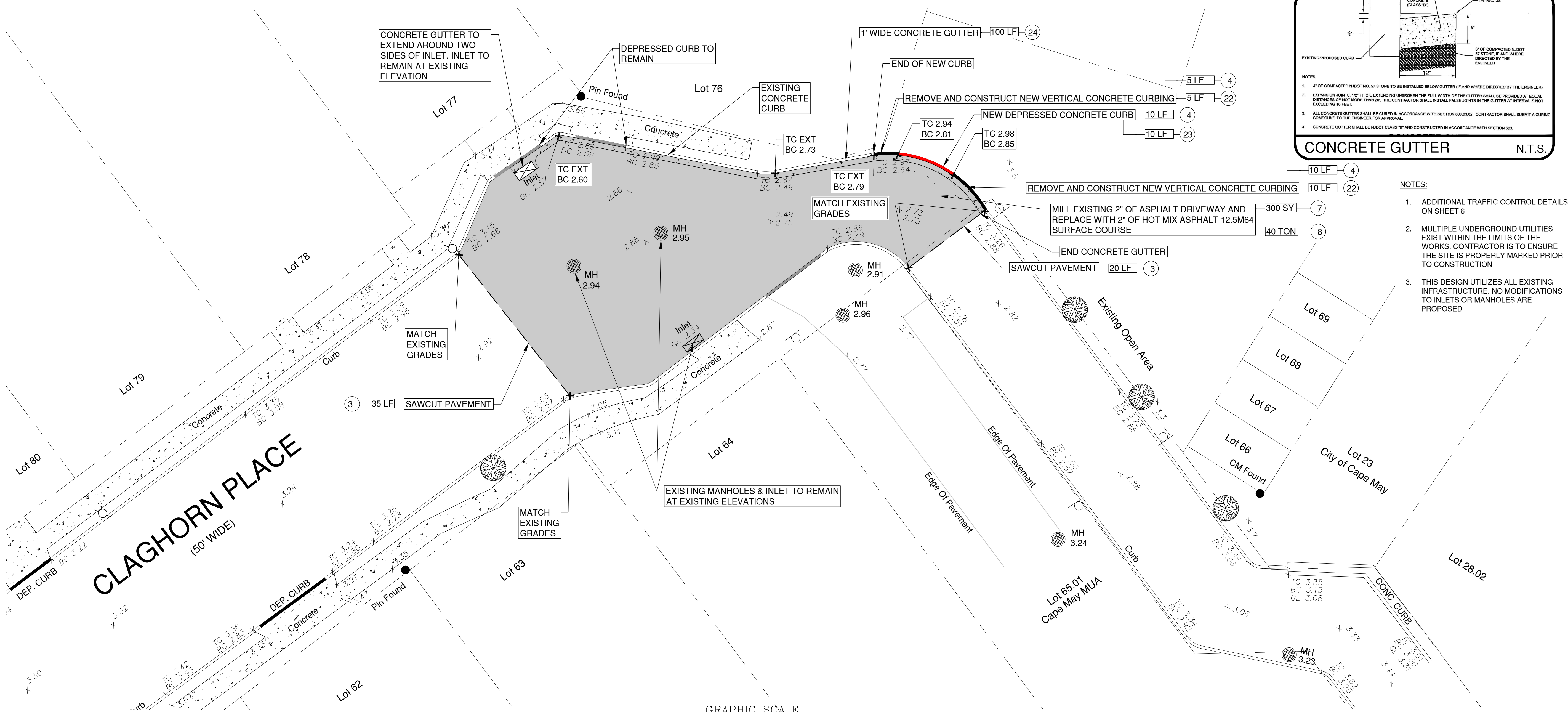


CONCRETE VERT. CURB N.T.S.

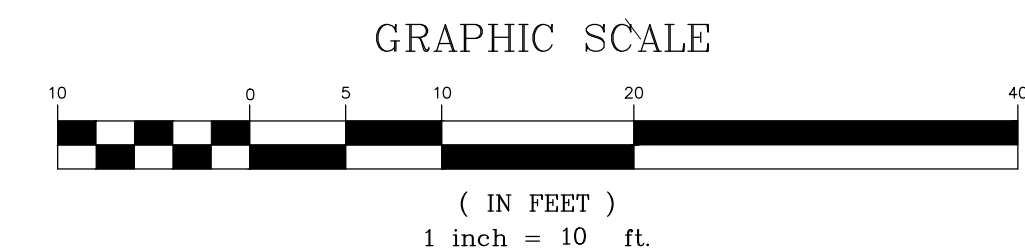


- NOTES:
- 4" OF COMPACTED AGGREGATE NO. 57 STONE TO BE INSTALLED BELOW GUTTER (IF AND WHERE DIRECTED BY THE ENGINEER).
 - EXPANSION JOINTS OF THICK EXTERIOR UNDER THE FULL WIDTH OF THE GUTTER SHALL BE PROVIDED AT EQUAL DISTANCES OF NOT MORE THAN 20'. THE CONTRACTOR SHALL INSTALL FALSE JOINTS IN THE GUTTERS AT INTERVALS NOT EXCEEDING 10 FEET.
 - ALL CONCRETE GUTTER SHALL BE CURED IN ACCORDANCE WITH SECTION 605.03.02. CONTRACTOR SHALL SUBMIT A CURING COMPUND TO THE ENGINEER FOR APPROVAL.
 - CONCRETE GUTTER SHALL BE AGGREGATE CLASS "B" AND CONSTRUCTED IN ACCORDANCE WITH SECTION 603.

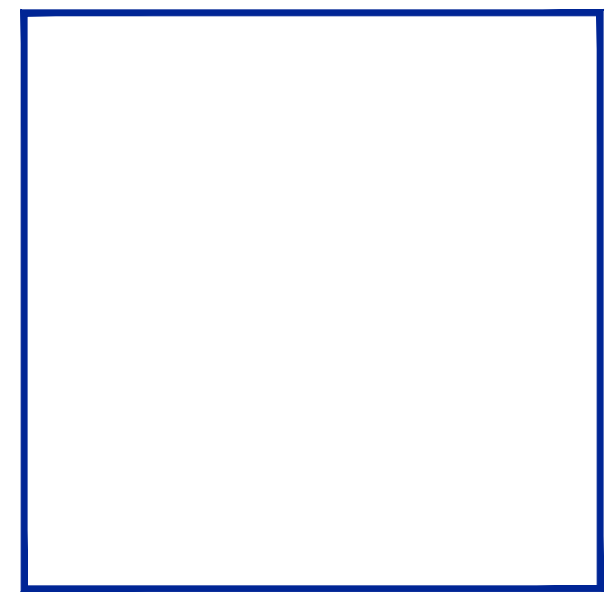
CONCRETE GUTTER N.T.S.



- NOTES:
- ADDITIONAL TRAFFIC CONTROL DETAILS ON SHEET 6
 - MULTIPLE UNDERGROUND UTILITIES EXIST WITHIN THE LIMITS OF THE WORKS. CONTRACTOR IS TO ENSURE THE SITE IS PROPERLY MARKED PRIOR TO CONSTRUCTION
 - THIS DESIGN UTILIZES ALL EXISTING INFRASTRUCTURE. NO MODIFICATIONS TO INLETS OR MANHOLES ARE PROPOSED



CLAGHORN PLACE DRAINAGE PLAN



CLAGHORN PLACE DRAINAGE PLAN
CITY OF CAPE MAY
CAPE MAY COUNTY
NEW JERSEY

Engineers - Landscape Architects - Planners
EDA
Environmental Design Associates, P.A.
CAMBRIDGE PROFESSIONAL OFFICES
1000 Cambridge Street
Cambridge, MA 02142
(609) 390-0332 • Fax (609) 390-9204 • www.engineeringdesign.com • CERTIFICATE OF AUTHORIZATION# 24062370300

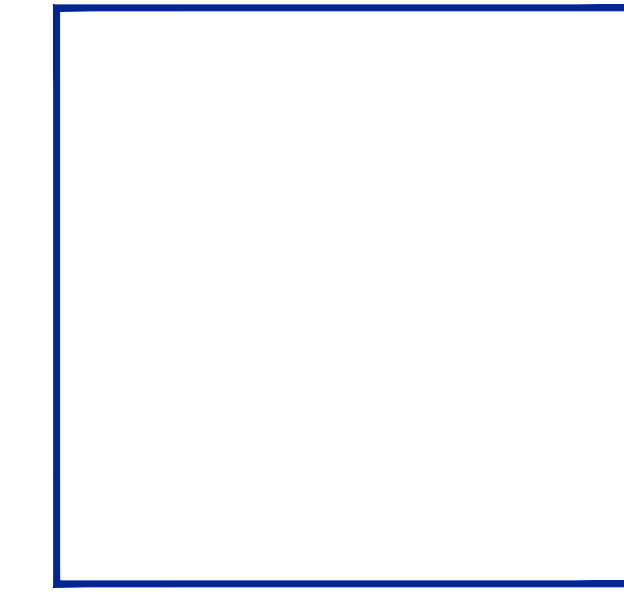
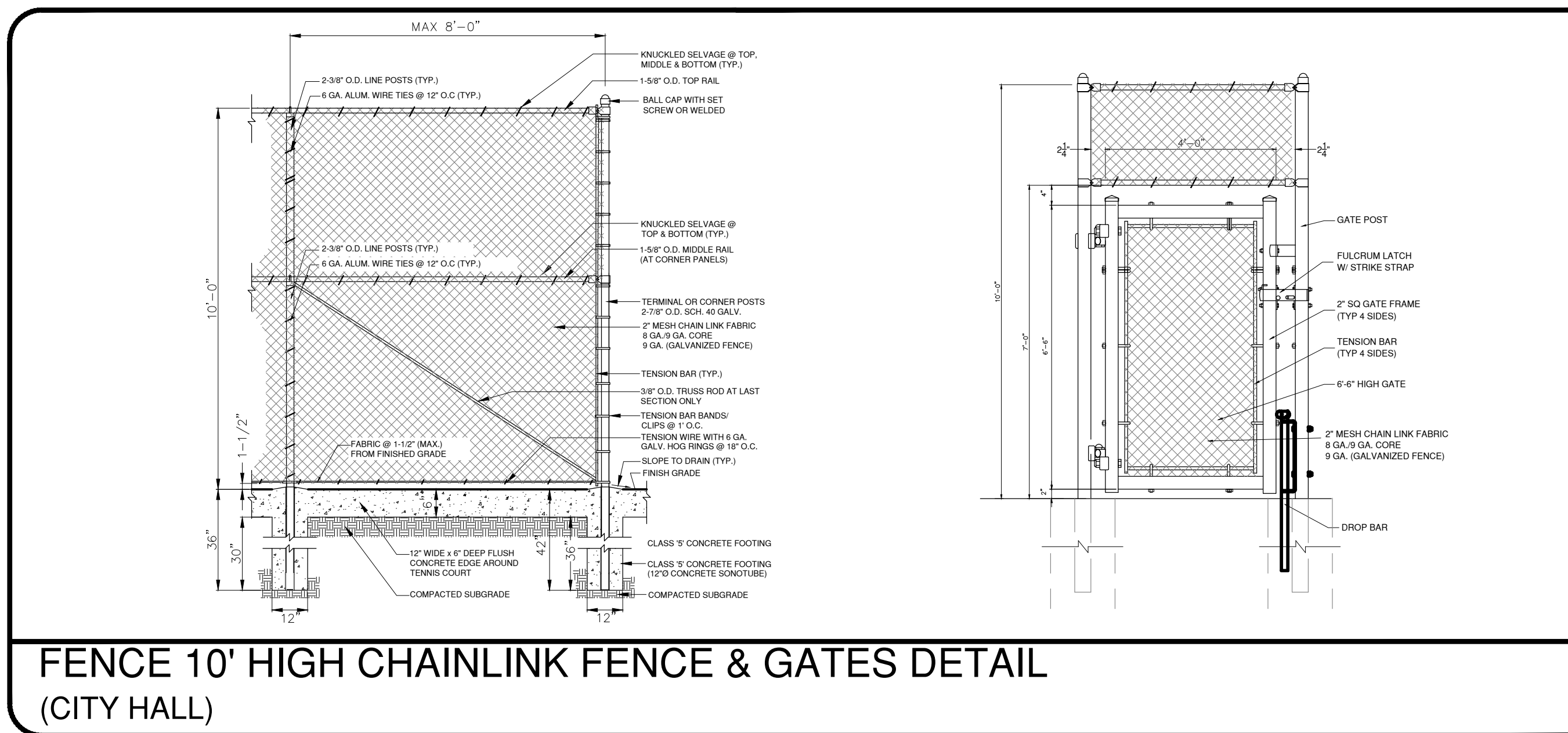
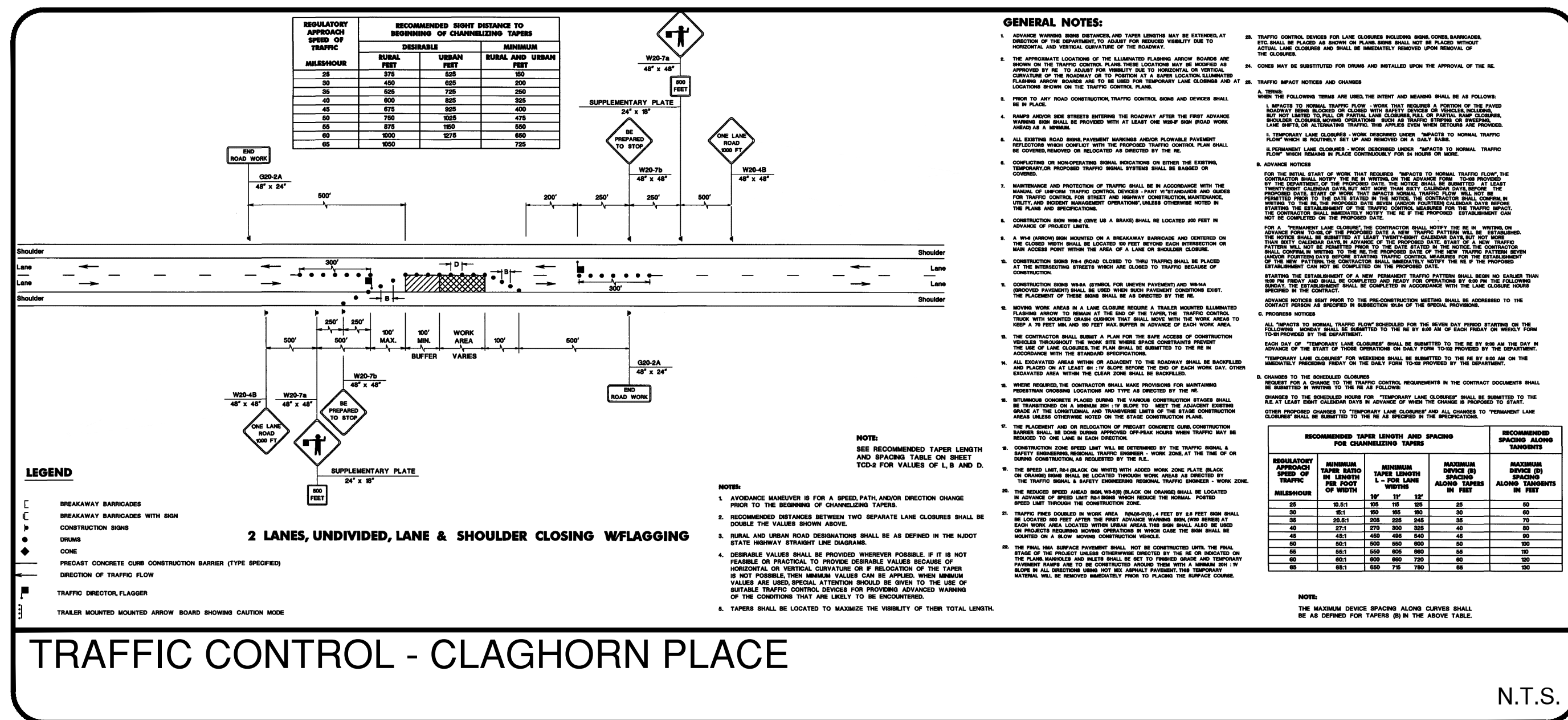
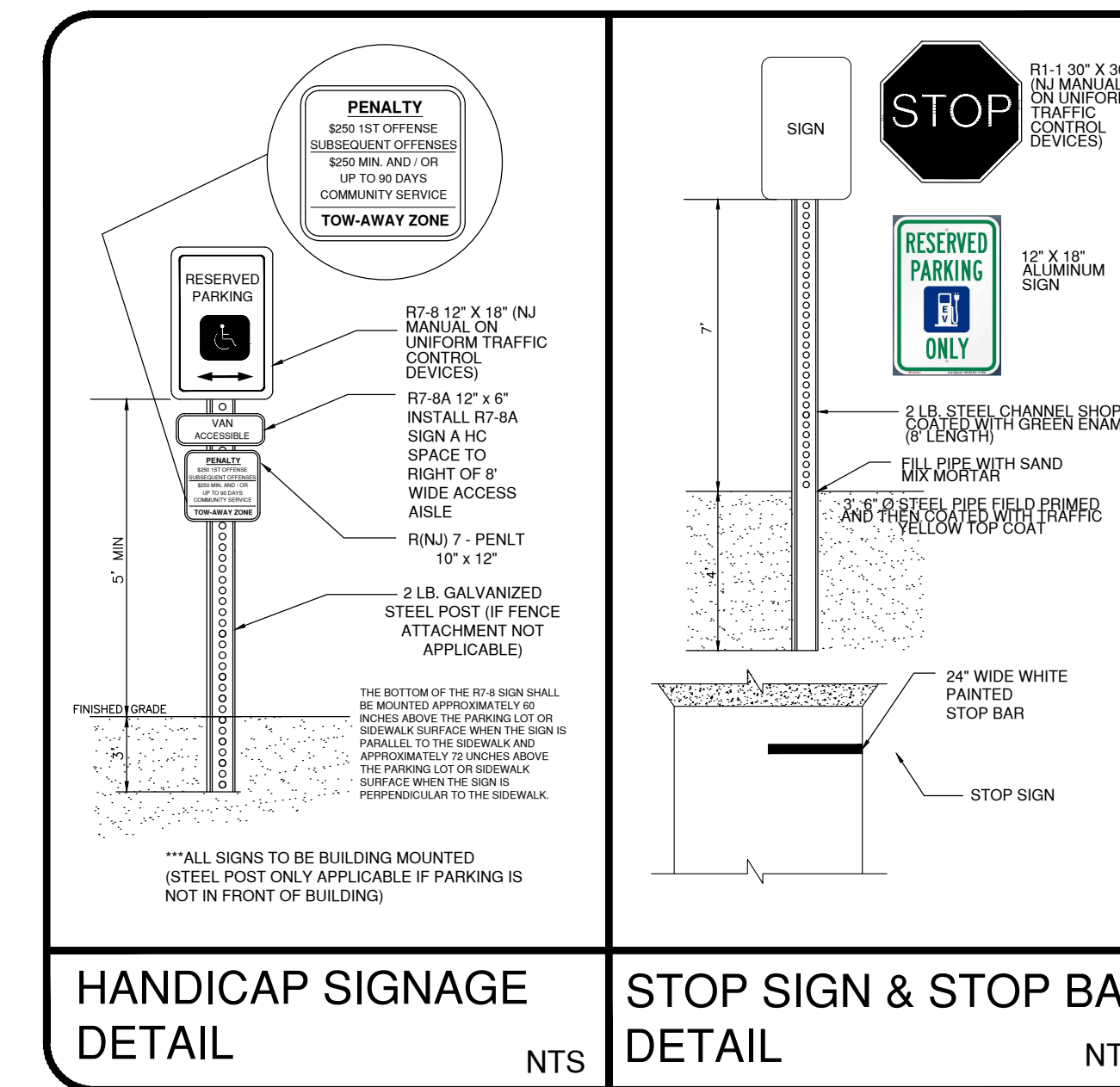
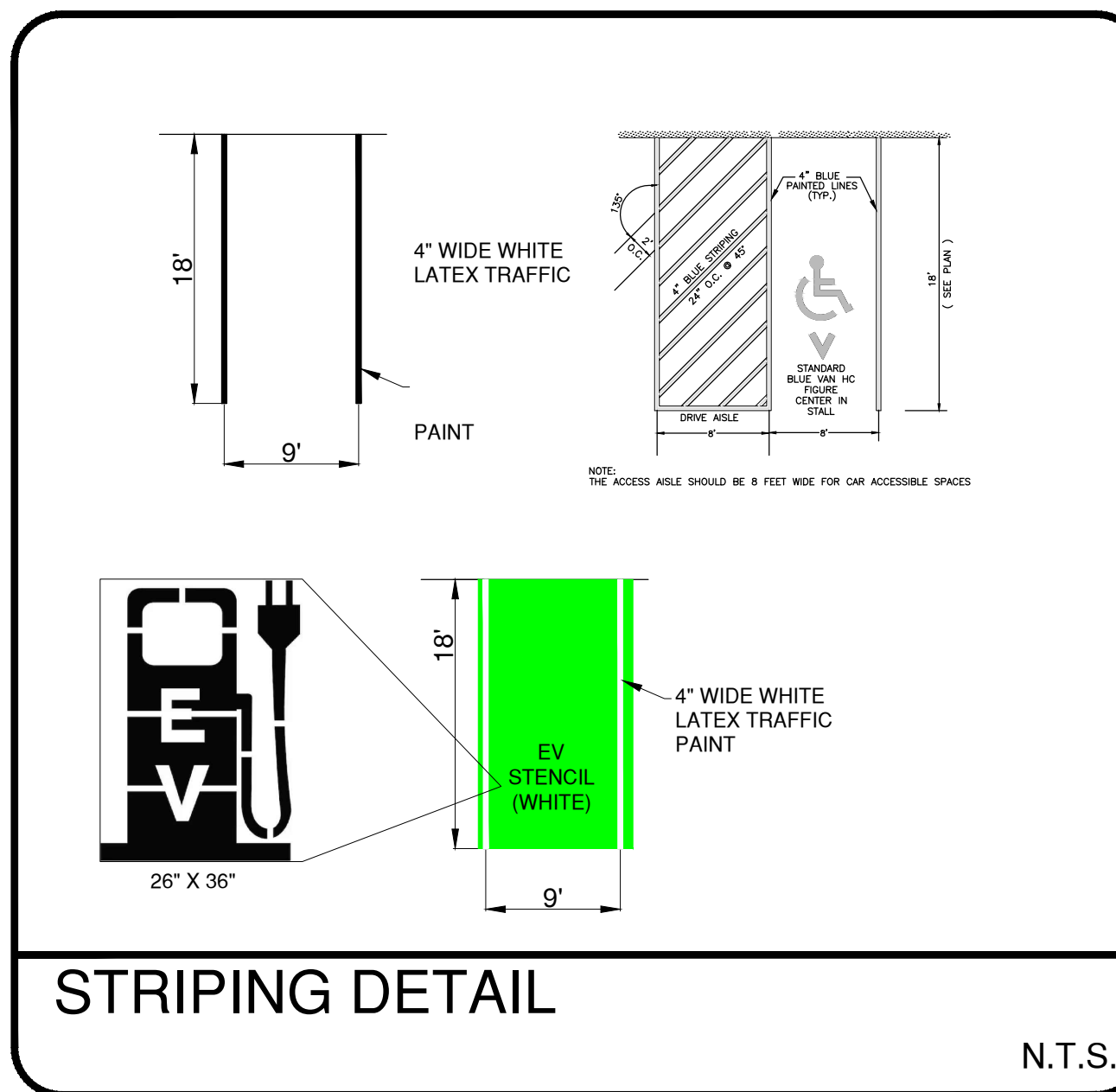
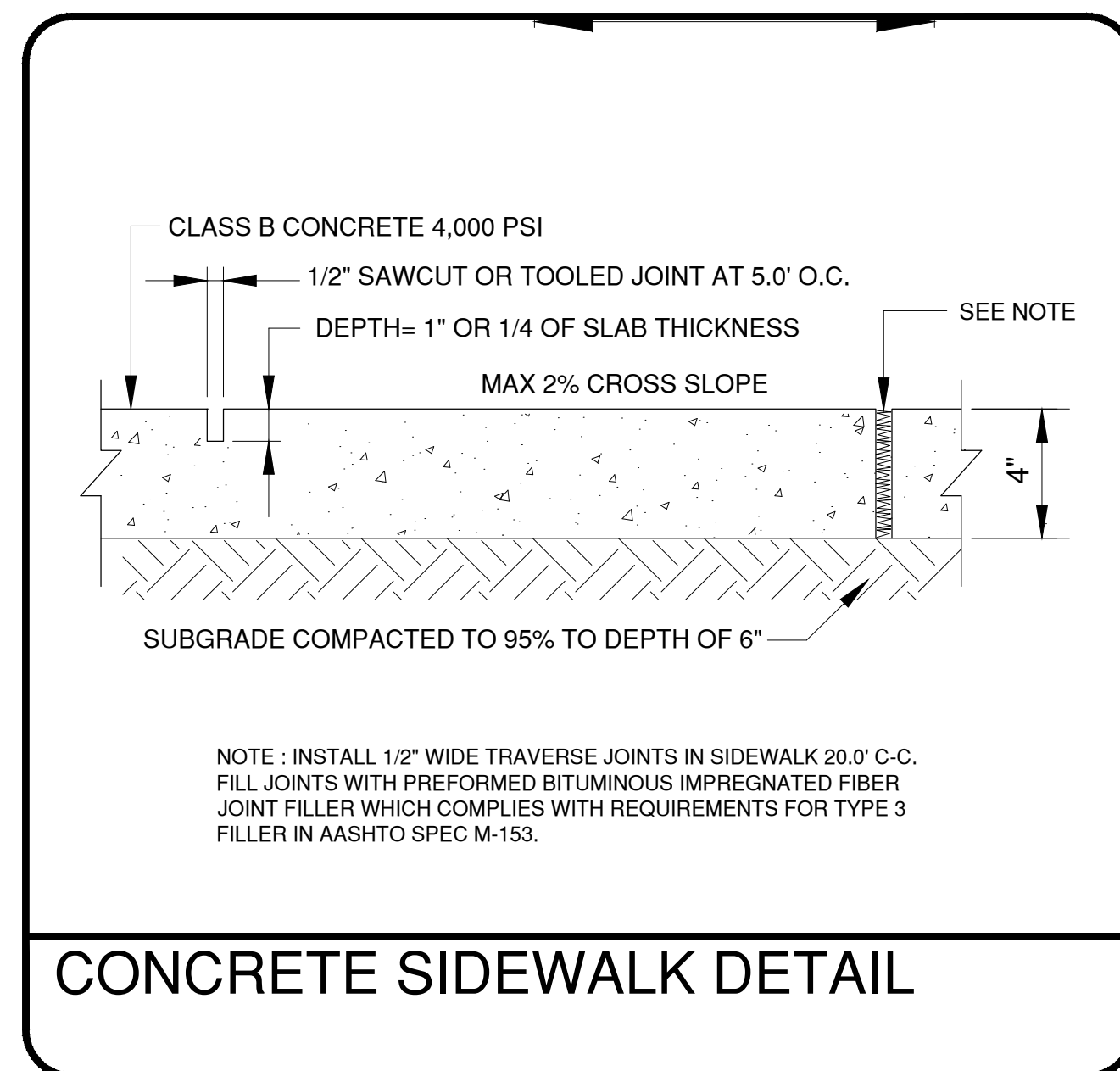
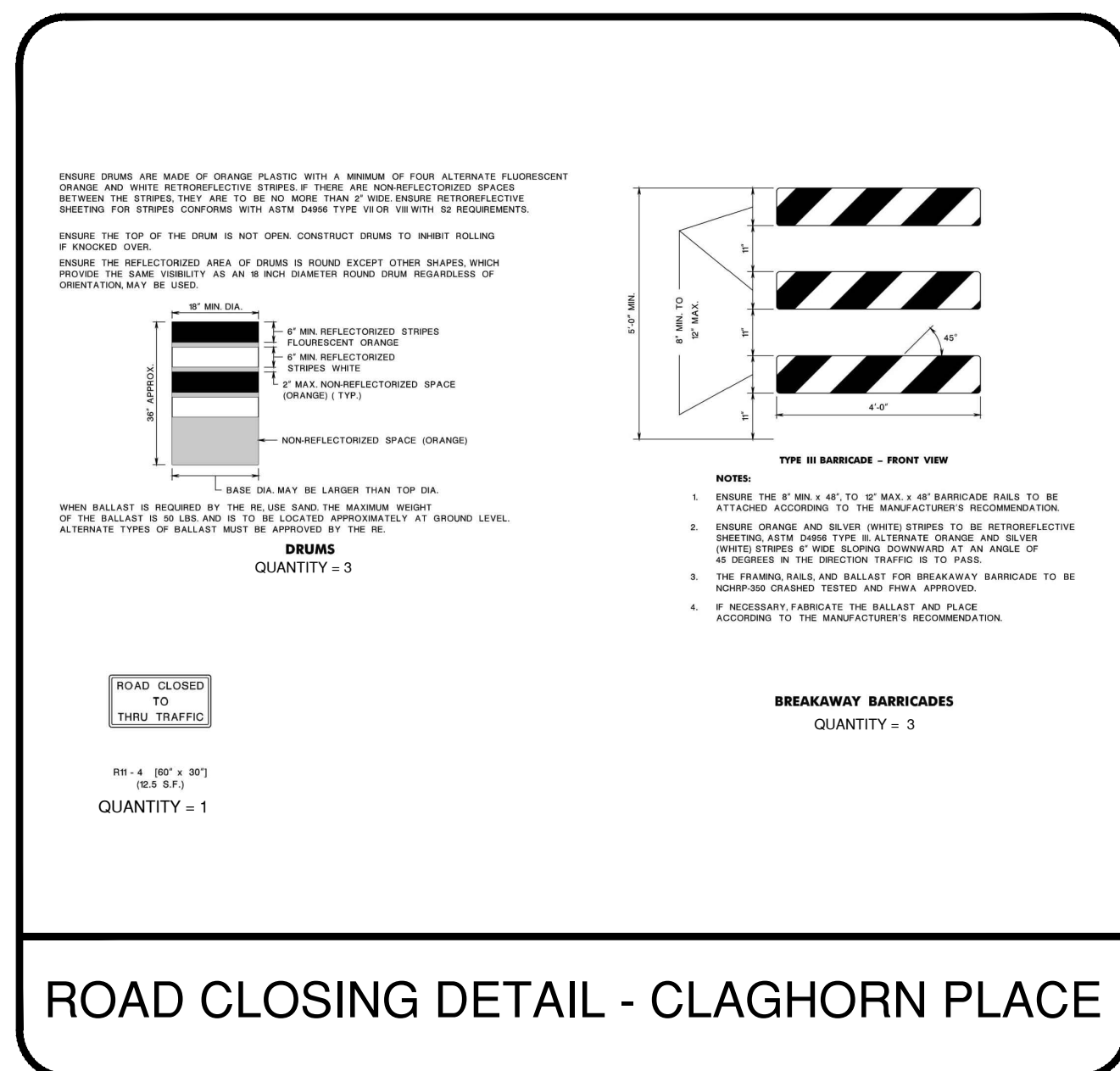
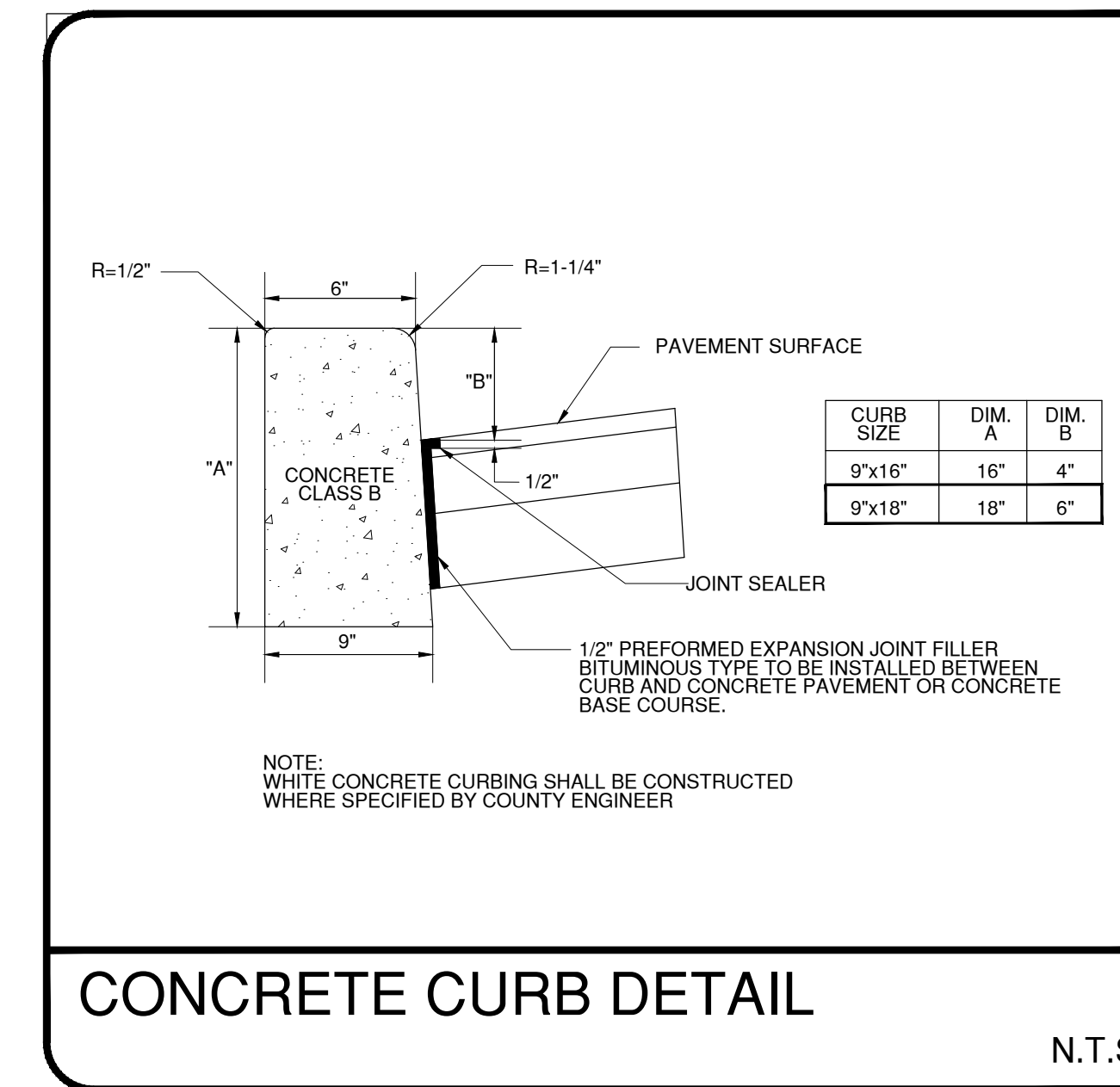
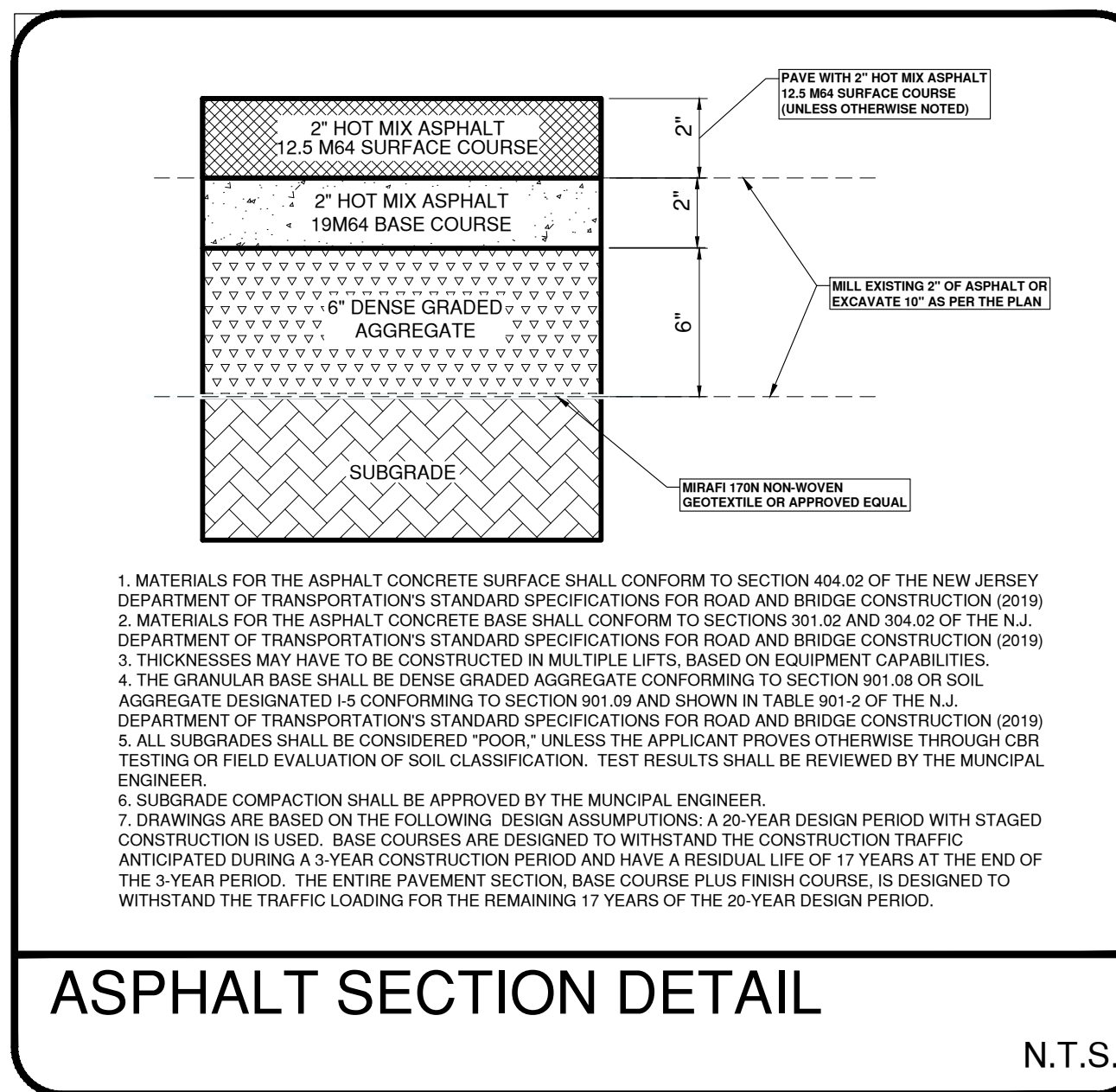
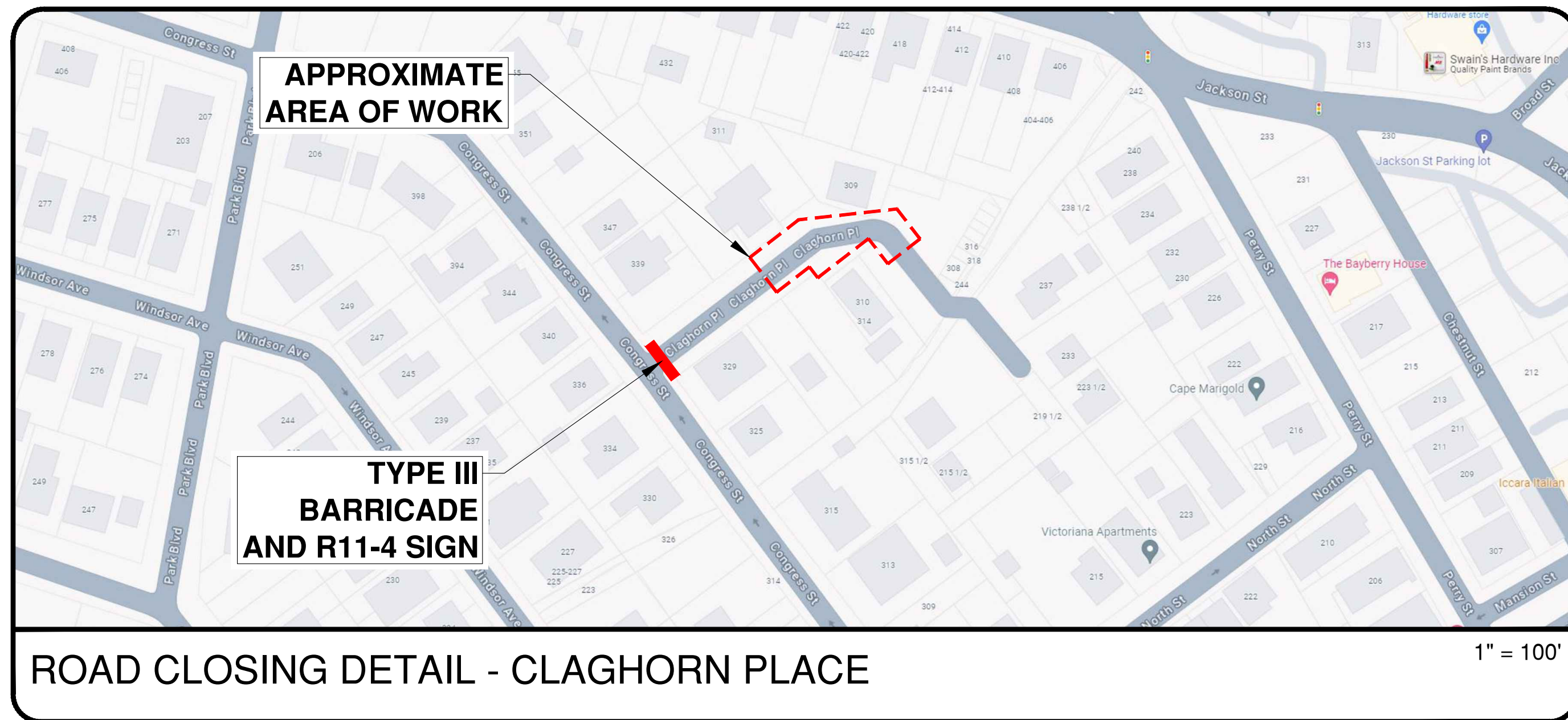
VINCENT C. ORLANDO
PROFESSIONAL ENGINEER
N.J.P.E. LIC. #32498

IF THIS PLAN OR DOCUMENT DOES NOT CONTAIN A RAISED SEAL IMPRESSION BEARING THE NAME AND REGISTRATION NUMBER OF THE ABOVE SIGNED PROFESSIONAL, IT MAY NOT BE AN AUTHORIZED COPY OF THE ORIGINAL DOCUMENT AND MAY HAVE BEEN ALTERED. REPRODUCTION OR FURTHER DISSEMINATION OF THE CONTENTS IN WHOLE OR IN PART REQUIRES PERMISSION IN WRITING FROM ENGINEERING DESIGN ASSOCIATES, P.A.

REVISION	DATE	BY



DATE: 8/6/2024	DRAWN BY: MSB
SCALE: AS NOTED	CHECKED BY: VCO
PROJECT #: CM-129	SHEET: 4 OF 5



Engineering Design Associates, P.A.
 Environmental Planners Landscape Architects
 CAMBRIDGE PROFESSIONAL OFFICES
 5 Cambridge Drive Ocean View New Jersey 08230
 (609) 390-0324 • www.engineeringdesign.com • CERTIFICATE OF AUTHORIZATION: 24GAC7970020

ENGINEERING DETAILS
 CITY OF CAPE MAY
 CAPE MAY COUNTY
 NEW JERSEY

VINCENT C. ORLANDO
 PROFESSIONAL ENGINEER
 N.J.P.E. LIC. #32498

IF THIS PLAN OR DOCUMENT DOES NOT CONTAIN A RAISED SEAL IMPRESSION BEARING THE NAME AND REGISTRATION NUMBER OF THE ABOVE SIGNED PROFESSIONAL, IT MAY NOT BE AN AUTHORIZED COPY OF THE ORIGINAL DOCUMENT AND MAY HAVE BEEN ALTERED. REPRODUCTION OR FURTHER DISSEMINATION OF THE CONTENTS IN WHOLE OR IN PART REQUIRES PERMISSION IN WRITING FROM ENGINEERING DESIGN ASSOCIATES, P.A.

REVISION	DATE	BY



DATE: 8/6/2024 DRAWN BY: MSB
 SCALE: AS NOTED CHECKED BY: VCO
 PROJECT #: CM-129 SHEET: 5 OF 5